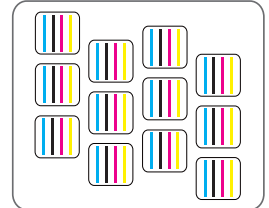


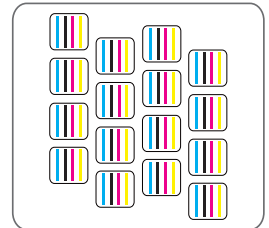
Sublimation Printer (12/16 Head)



Twelve i3200 Head



Sixteen i3200 Head



Sublimation Ink



Technical Specification

Model	CEJ-1912TX Pro	CEJ-1916TX Pro
Print Head	Twelve i3200 A-1 Print Heads EPSON ORIGINAL	Sixteen i3200 A-1 Print Heads
Droplet Size	3.5pl	
Acceptable Media	Width 75.2 in.(1920 mm)	
	Thickness Maximum 39 mil(1 mm)	
	Weight 200 lb.(1000 kg)	
Printing Width	74.8 in.(1900 mm)	
Ink Cartridges	Type Dye Sublimation Ink	
	Capacity Siphon + Automatic Ink Replenishment	
	Color 4 colors (Cyan, Magenta, Yellow, Black)	
Printing Resolution	Maximum 2400 dpi	Maximum 2400 dpi
Printing Speed	1pass - 7000 mtr / 24 Hrs.(44")*	1pass - 8000 mtr / 24 Hrs.(44")*
Print media control	Air Shaft Automatic Take-up	
Interface	USB 3.0	
Power Supply	AC 220V + 5%, 16A, 50/60 HZ	
Power Requirement	Printer - 2500W , Drying Unit Power - 8 KW	
Dimensions(with stand)	144(W)x29.5(D)x72(H) in [(3670(W)x750(D)x1850(H) mm)]	
Dryer	External Automatic Air Heat Integrated Dryer	
Package Dimensions	Entirety Packing : 144(W)x29.5(D)x72(H) in.	
	Split Packing : 3800(W)x560(D)x1750(H) mm	
CPU Configuration	Core i7 / i9 , RAM 16 GB, HDD - Min. 1 TB, SSD - 500GB, Graphics Card	
Standard Components	External Automatic Air Heat Integrated Dryer, Low Ink Alarm System, Air Shaft Media Loading and Take-up, and Automatic Moisturizing and Cleaning Init	
Accessories	USB cable, media clamp, manual, drain bottle, ink cartridges etc.	